



INSTRUCTION BULLETIN

No. 340389
Machine: 5700
Published: 11-00/00
System: SCRUBBING

NOTE: DO NOT DISCARD the Parts List from the Instruction Bulletin. Place the Parts List in the appropriate place in your machine manual for future reference. Retaining the Parts List will make it easier to reorder individual parts and will save you the cost of ordering an entire kit.

NOTE: Numbers in parenthesis () are reference numbers for parts listed in Bill of Materials.

Installation instructions for kit number 369756

SYNOPSIS / PROBLEM:

This kit contains the parts needed to replace the control panel shroud on the model 5700 scrubber.

Please follow step-by-step instructions.

SPECIAL TOOLS / CONSIDERATIONS: Hand Drill, 7/32, 1/2 and 41/64 drill bits

(Estimated time to complete: 2 hours)

PREPARATION:

(Refer to FIG. 1 and 2)

FOR SAFETY: Before leaving or servicing machine, stop on level surface and set parking brake. Then turn off machine and remove key.

1. Disconnect battery cables from machine.

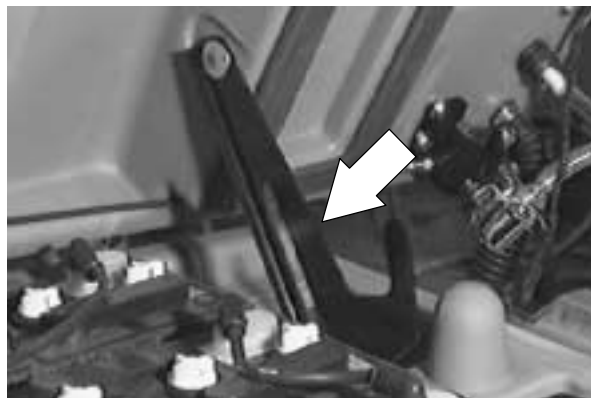


WARNING: Always disconnect battery cables from machine before working on electrical components.

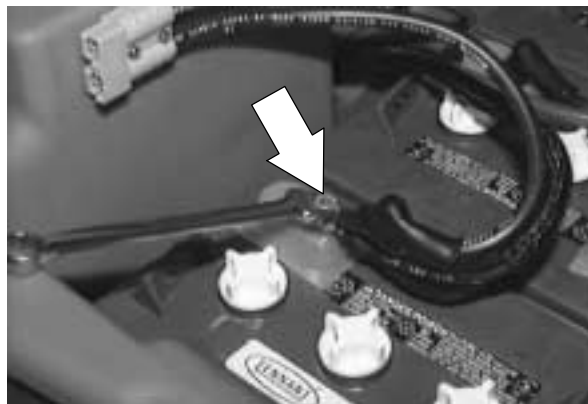
SHROUD REMOVAL:

(Refer to FIG. 1 and 2)

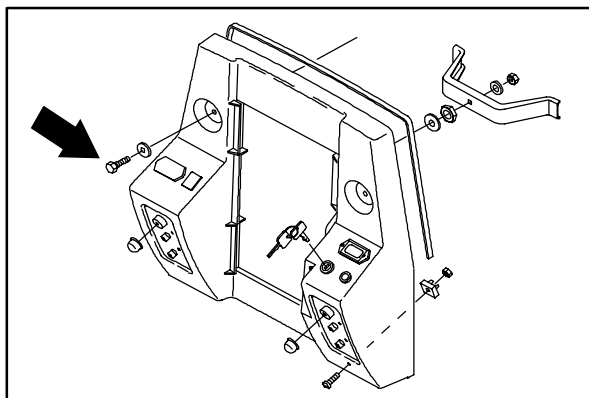
1. Make sure the solution tank is empty. Raise the solution tank and engage the safety arm.



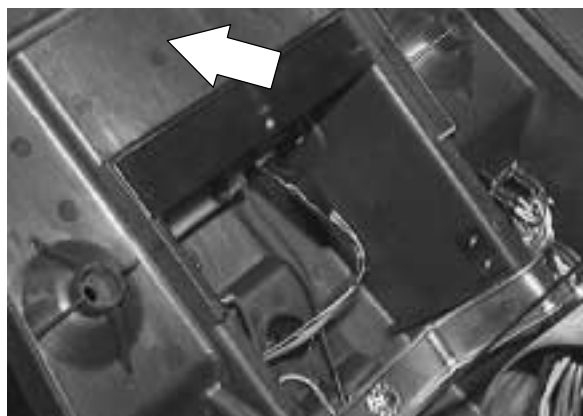
NOTE: Disconnect the negative battery cable from the battery nearest the back of the machine before servicing any electrical components.



2. Remove the M8 hex screws holding the rear electrical panel to the electrical mounting plate. Tilt the panel out. (Refer to FIG. 1)



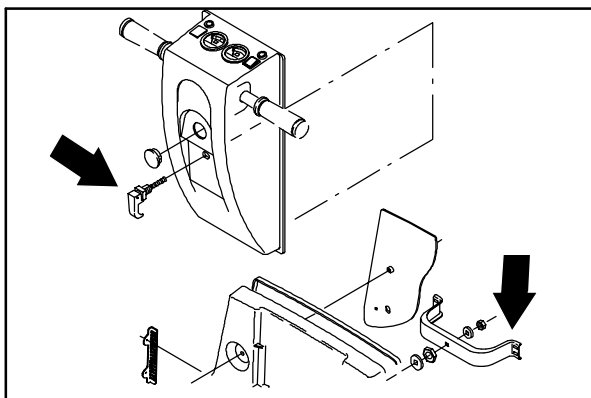
3. Tilt the instrument panel assembly back until it is resting against the lanyard strap.



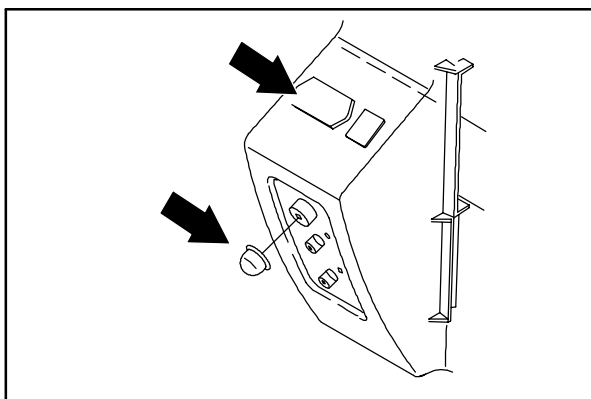
4. All of the electrical components that are contained in the instrument panel and on the electrical mount panel, can now be easily accessed. Label all accessory wires before disconnecting from accessories mounted in the shroud.



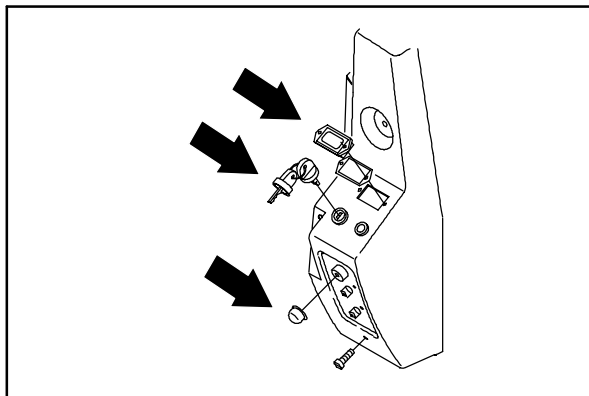
5. Loosen the speed control handle latch, and remove the shroud locking bracket from behind the shroud. Set the speed control handle and locking bracket aside. (Refer to FIG. 1)



6. Disconnect, remove and set aside the hourmeter, power wand switch and circuit breakers from the left hand side of the shroud. (Refer to FIG. 1)



7. Disconnect, remove, and set aside the battery discharge indicator, on/off key switch and circuit breakers from the right hand side of the shroud. (Refer to FIG. 1)

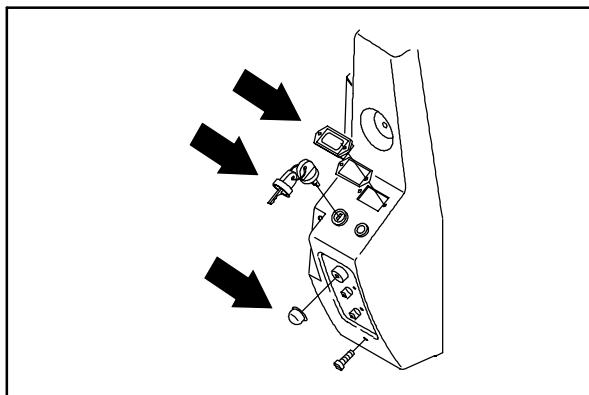


8. Disconnect the shroud from the lanyard strap, and remove the old shroud from the machine.

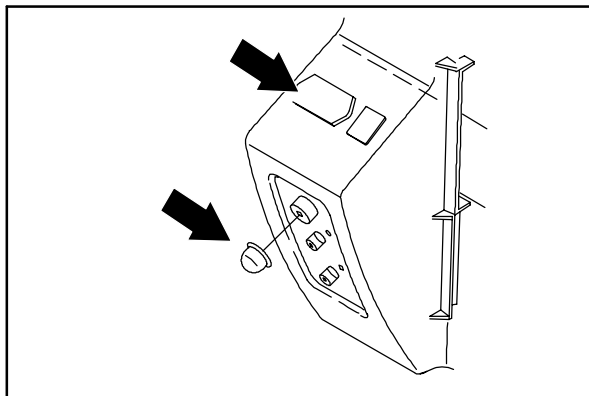
NEW SHROUD INSTALLATION:

(Refer to Figure 2)

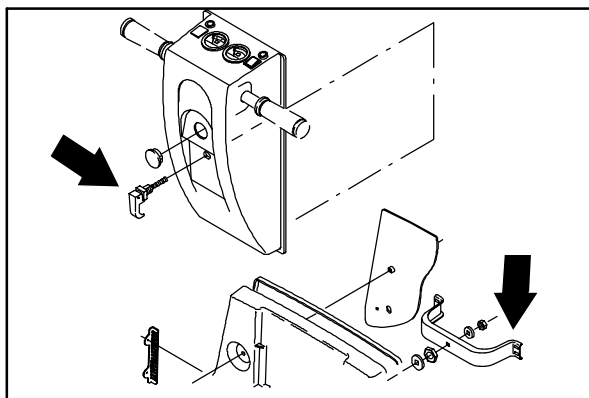
1. If installing the new shroud on a machine with older circuit breakers, new circuit breaker mounting holes will need to be drilled. (Refer to Figure 2)
2. Using the hole locations shown in figure 2, drill four 7/32 holes, two 1/2 in holes, and one 41/64 hole on each side of the shroud, for mounting the old circuit breakers. (Refer to Figure 2)
3. Reconnect the new shroud to the lanyard strap, and install the new shroud to the machine. Leave the shroud tilted open to access the wire harness connections for instruments.
4. Reinstall and reconnect the set aside the battery discharge indicator, on/off key switch and circuit breakers in the right hand side of the new shroud.



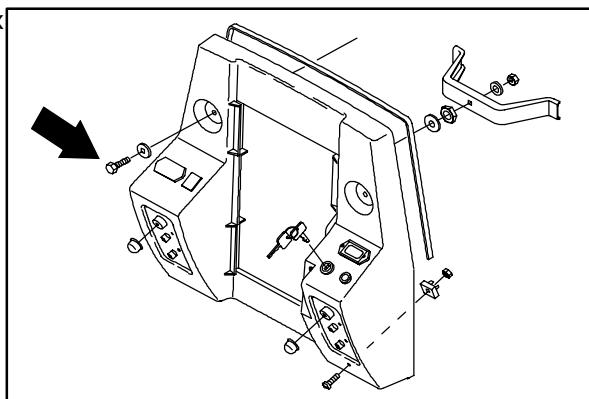
5. Reinstall and reconnect the hourmeter, power wand switch and circuit breakers in the left hand side of the shroud.



6. Reinstall the speed control handle assembly onto the new shroud with the securing latch and locking bracket.



7. Tilt the panel back in. Secure the panel with M8 hex screws.



8. Reconnect the battery cables to the machine. Turn the machine power on, and check all the instruments on the control panel for proper operation.

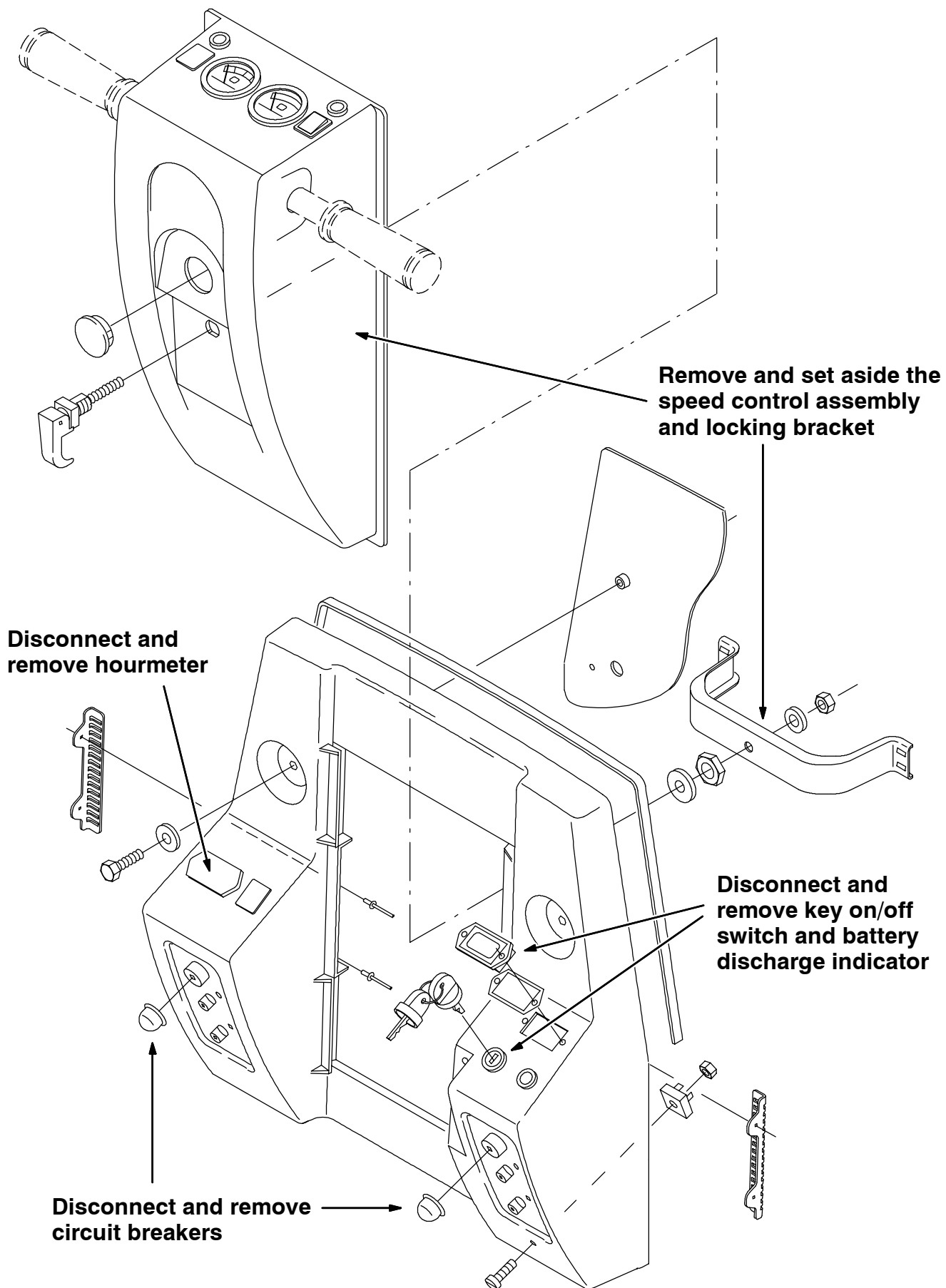


FIG. 1 - OLD SHROUD REMOVAL

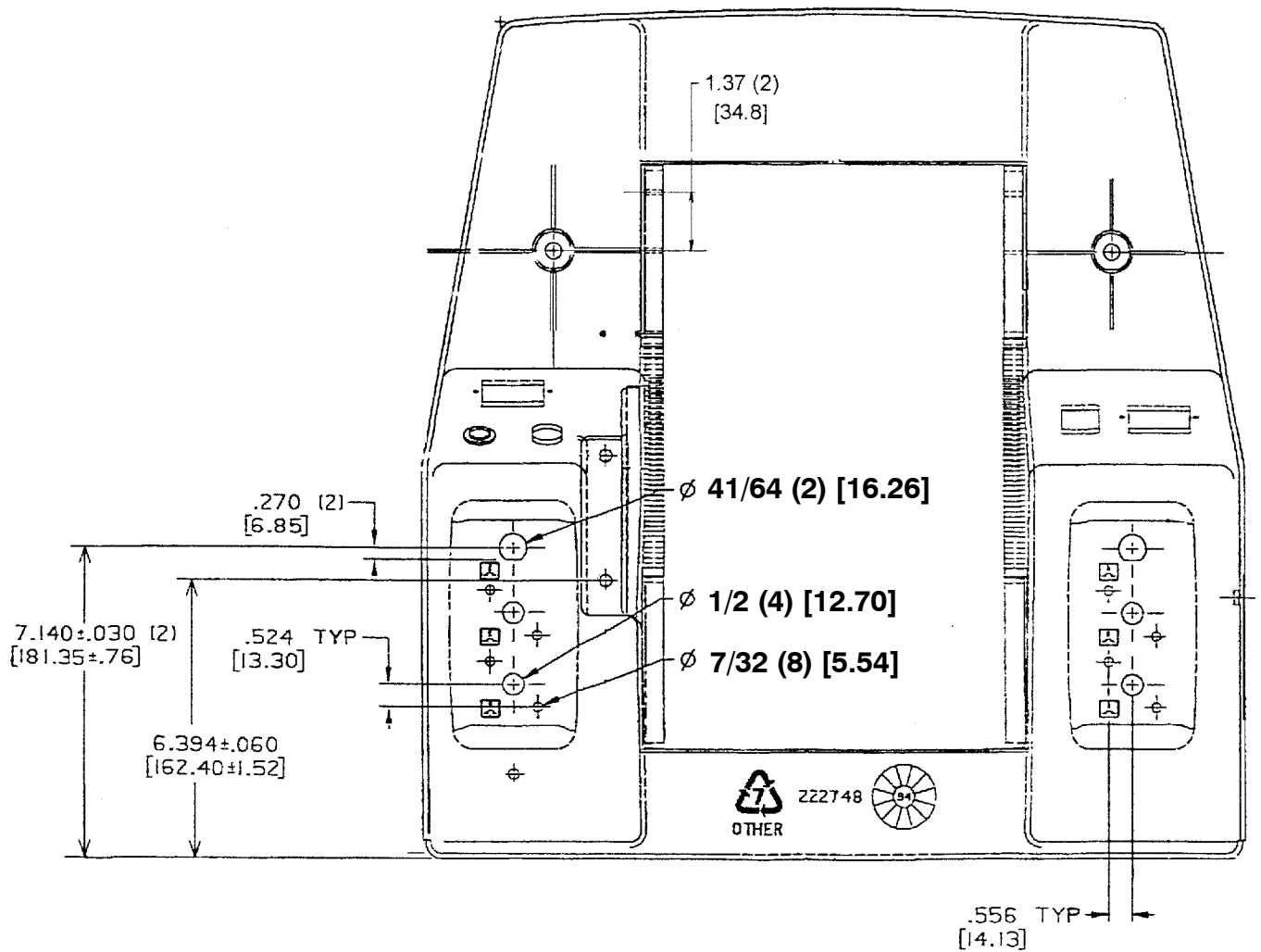


FIG. 2 - REWORKED SHROUD HOLE LOCATIONS

BILL OF MATERIALS FOR SHROUD REWORK KIT 369756

Ref.	TENNANT Part No.	Description	Qty.
1	397870	Panel, instrument, mold	1

TENNANT COMPANY
P. O. Box 1452
Minneapolis, MN 55440-1452